



| | | | |
|------------------------------------------------------------------------------------------------------------------------------------------------------------------------------------------------------------------------------------------------------------------------------------------------------------------------------------------------------------------------------------------------------------------------------------------------------------------------------------------------|----------------------------------------------------------------------------------------------------------------------------------------------------------------------------------------------------------------------------------------------------------------------------------------------------------------------------------------------------------------------------------------------------------------|--------------------------------------------------------------------------------------|-----------------------------|
| Prüfbericht - Nr.: 0114071849f6 001 | | Seite 1 von 5 | |
| <i>Test Report No.:</i> | | <i>Page 1 of 5</i> | |
| Auftraggeber: <i>Client:</i> | Chi Mei Corporation 59-1, San Chia, Jen Te, Tainan City 71702, Taiwan, R.O.C. | | |
| Gegenstand der Prüfung: <i>Test Item:</i> | ACRYLONITRILE-STYRENE-ACRYLATE COPOLYMER | | |
| Bezeichnung: <i>Identification:</i> | KIBILAC [®] PW-978B | | |
| Anlieferungszustand: <i>Delivery condition:</i> | apparent good | Eingangsdatum: <i>Date of Receipt:</i> | 2017-12-01 |
| Prüfart: <i>Testing location:</i> | TÜV Rheinland (Shanghai) Co., Ltd. | | |
| Prüfgrundlage: <i>Test specification:</i> | According to RoHS (recast): Restriction of the Use of Certain Hazardous Substances in Electrical and Electronic Equipment, 2011/65/EU last amended by (EU) 2015/863: Total Content of Lead, Cadmium, Mercury, Chromium VI, Polybrominated Biphenyls, Polybrominated Diphenyl Ethers; and Benzylbutyl phthalate (BBP), Dibutyl phthalate (DBP), Bis(2-ethylhexyl) phthalate (DEHP), Diisobutyl phthalate (DIBP) | | |
| Prüfergebnis: <i>Test result:</i> | According to the kind and extend of tests performed the above mentioned test item passed the test specification. | | |
| geprüft/ tested by: | | kontrolliert/ checked by: | |
|  | |  | |
| 2018-01-02 Anne Chen /Coordinator | | 2018-01-02 Carl Chang /Department Manager | |
| Datum <i>Date</i> | Name/Stellung <i>Name/Position</i> | Unterschrift <i>Signature</i> | Datum <i>Date</i> |
| | | | |
| Sonstiges/ Other Aspects: | | | |
| Test period: 2017-12-01 – 2018-01-02 | | | |
| Abkürzungen: | | Abbreviations: | |
| ok / P = entspricht Prüfgrundlage | | ok / P = passed | |
| fail / F = entspricht nicht Prüfgrundlage | | fail / F = failed | |
| n.a. / N = nicht anwendbar | | n.a. / N = not applicable | |
| <p>Dieser Prüfbericht bezieht sich nur auf das o.g. Prüfmuster und darf ohne Genehmigung der Prüfstelle nicht auszugsweise vervielfältigt werden. Dieser Bericht berechtigt nicht zur Verwendung eines Prüfzeichens.</p> <p><i>This test report relates to the a. m. test sample. Without permission of the test center this test report is not permitted to be duplicated in extracts. This test report does not entitle to carry any safety mark on this or similar products.</i></p> | | | |



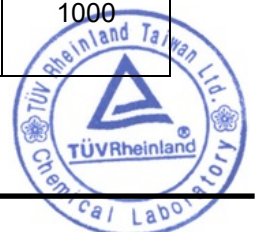
Test Report No. : 0114071849f6 001 2018-01-02
 Customer : Chi Mei Corporation
 Test Method : Total Cadmium, Lead, Mercury, Chromium
 - Ref. to IEC 62321-4:2013 and IEC 62321-5:2013
 Chromium (VI)
 - For Metal material - Ref. to IEC 62321-7-1:2015
 - For Plastic or Electronic material - Ref. to IEC 62321-7-2:2017
 - For Leather material - Ref. to ISO 17075:2007
 PBBs, PBDEs - Ref. to IEC 62321-6:2015

| Sample Material Lab.-No. | | LoD | KIBILAC® PW-978B plastic/off white TCL171201-65 |
|------------------------------------------------------|-------|-----|-------------------------------------------------|
| Cadmium (Cd) | mg/kg | 2 | n.d. |
| Lead (Pb) | mg/kg | 2 | n.d. |
| Mercury (Hg) | mg/kg | 2 | n.d. |
| Chromium VI (Cr VI) | mg/kg | 2 | n.d. |
| Sum of Polybrominated biphenyls (PBBs) | mg/kg | - | n.d. |
| Monobromobiphenyl | mg/kg | 5 | n.d. |
| Dibromobiphenyl | mg/kg | 5 | n.d. |
| Tribromobiphenyl | mg/kg | 5 | n.d. |
| Tetrabromobiphenyl | mg/kg | 5 | n.d. |
| Pentabromobiphenyl | mg/kg | 5 | n.d. |
| Hexabromobiphenyl | mg/kg | 5 | n.d. |
| Heptabromobiphenyl | mg/kg | 5 | n.d. |
| Octabromobiphenyl | mg/kg | 5 | n.d. |
| Nonabromobiphenyl | mg/kg | 5 | n.d. |
| Decabromobiphenyl | mg/kg | 5 | n.d. |
| Sum of Polybrominated diphenyl ethers (PBDEs) | mg/kg | - | n.d. |
| Monobromodiphenyl ether | mg/kg | 5 | n.d. |
| Dibromodiphenyl ether | mg/kg | 5 | n.d. |
| Tribromodiphenyl ether | mg/kg | 5 | n.d. |
| Tetrabromodiphenyl ether | mg/kg | 5 | n.d. |
| Pentabromodiphenyl ether | mg/kg | 5 | n.d. |
| Hexabromodiphenyl ether | mg/kg | 5 | n.d. |
| Heptabromodiphenyl ether | mg/kg | 5 | n.d. |
| Octabromodiphenyl ether | mg/kg | 5 | n.d. |
| Nonabromodiphenyl ether | mg/kg | 5 | n.d. |
| Decabromodiphenyl ether | mg/kg | 5 | n.d. |

Notes:

- n.d. - not detected
- n.a. - not applicable
- LoD - Limit of Detection
- mg/kg is equal to ppm (parts per million)

| | Cd | Cr(VI) | Pb | Hg | PBBs | PBDEs |
|-------------------------------------------------------------|-----|--------|------|------|------|-------|
| Maximum permissible Limit acc. to 2011/65/EU (mg/kg) | 100 | 1000 | 1000 | 1000 | 1000 | 1000 |



Produkte
Products

Test Report No. : 0114071849f6 001
 Customer : Chi Mei Corporation
 Test Method : BBP/DBP/DEHP/DIBP - Ref. to IEC 62321-8:2017

2018-01-02

| Sample Material Lab.-No. | LoD | KIBILAC® PW-978B plastic/off white TCL171201-65 |
|------------------------------------|-----|-------------------------------------------------|
| Benzylbutylphthalate (BBP) mg/kg | 50 | n.d. |
| Dibutylphthalate (DBP) mg/kg | 50 | n.d. |
| Diethylhexylphthalate (DEHP) mg/kg | 50 | n.d. |
| Diisobutylphthalate (DIBP) mg/kg | 50 | n.d. |

Notes:

- n.d. - not detected
- n.a. - not applicable
- LoD - Limit of Detection
- mg/kg is equal to ppm (parts per million)

| | BBP | DBP | DEHP | DIBP |
|----------------------------------------------------------------|------|------|------|------|
| Maximum permissible Limit acc. to (EU) 2015/863 (mg/kg) | 1000 | 1000 | 1000 | 1000 |

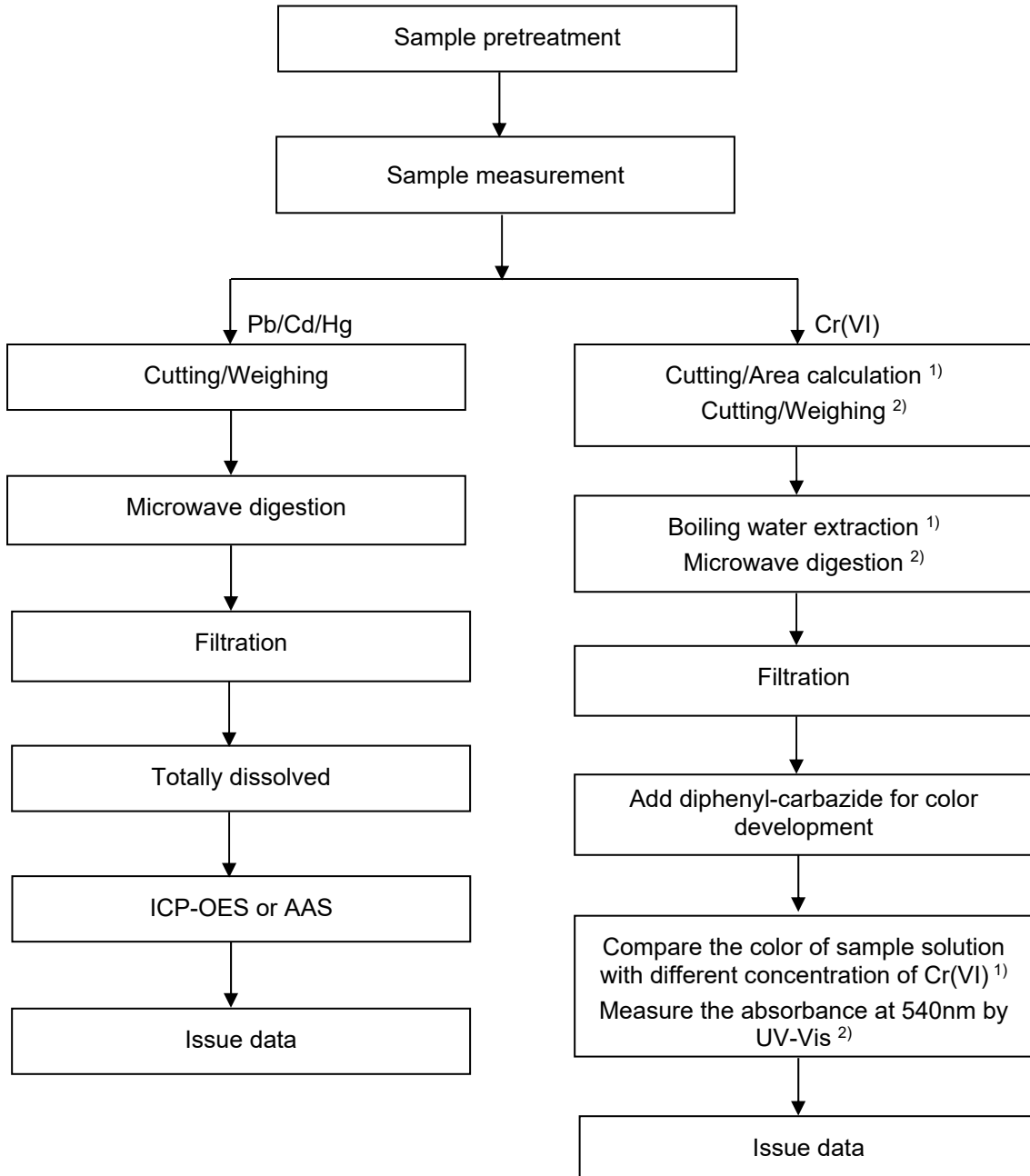
Test Sample


Test Report No. : 0114071849f6 001
 Customer : Chi Mei Corporation

2018-01-02

Testing procedure:

RoHS (Pb, Cd, Hg, Cr(VI))



Notes: ¹⁾ For metallic material
²⁾ For non-metallic material

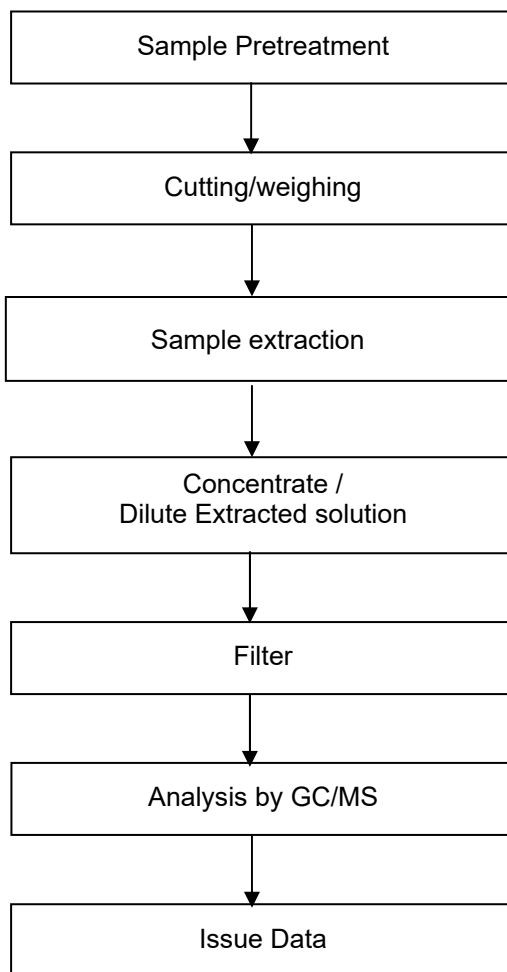


Test Report No. : 0114071849f6 001
Customer : Chi Mei Corporation

2018-01-02

Testing procedure:

RoHS (PBBs/PBDEs, DEHP/DBP/BBP/DIBP)



--- End of Test-Report ---

